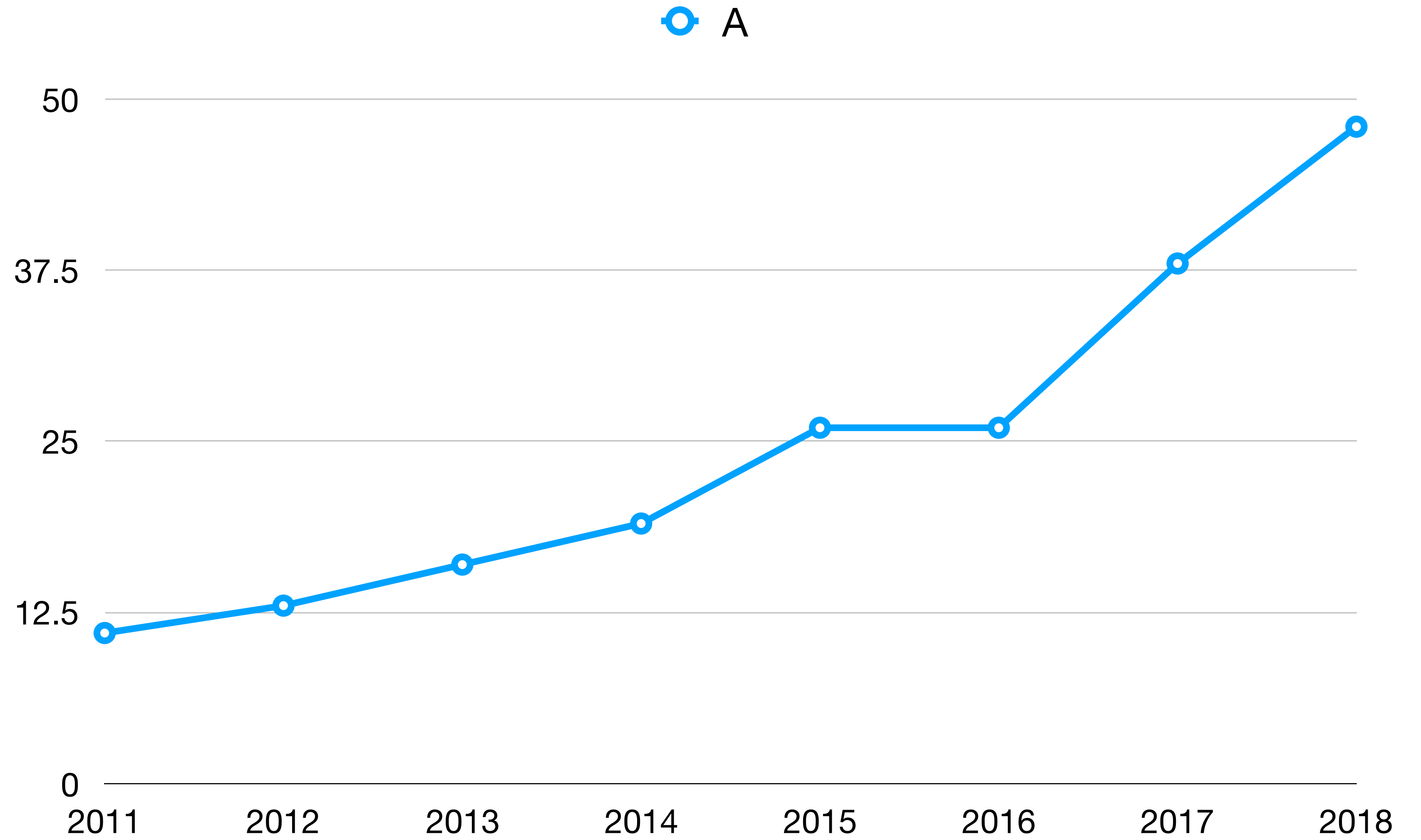


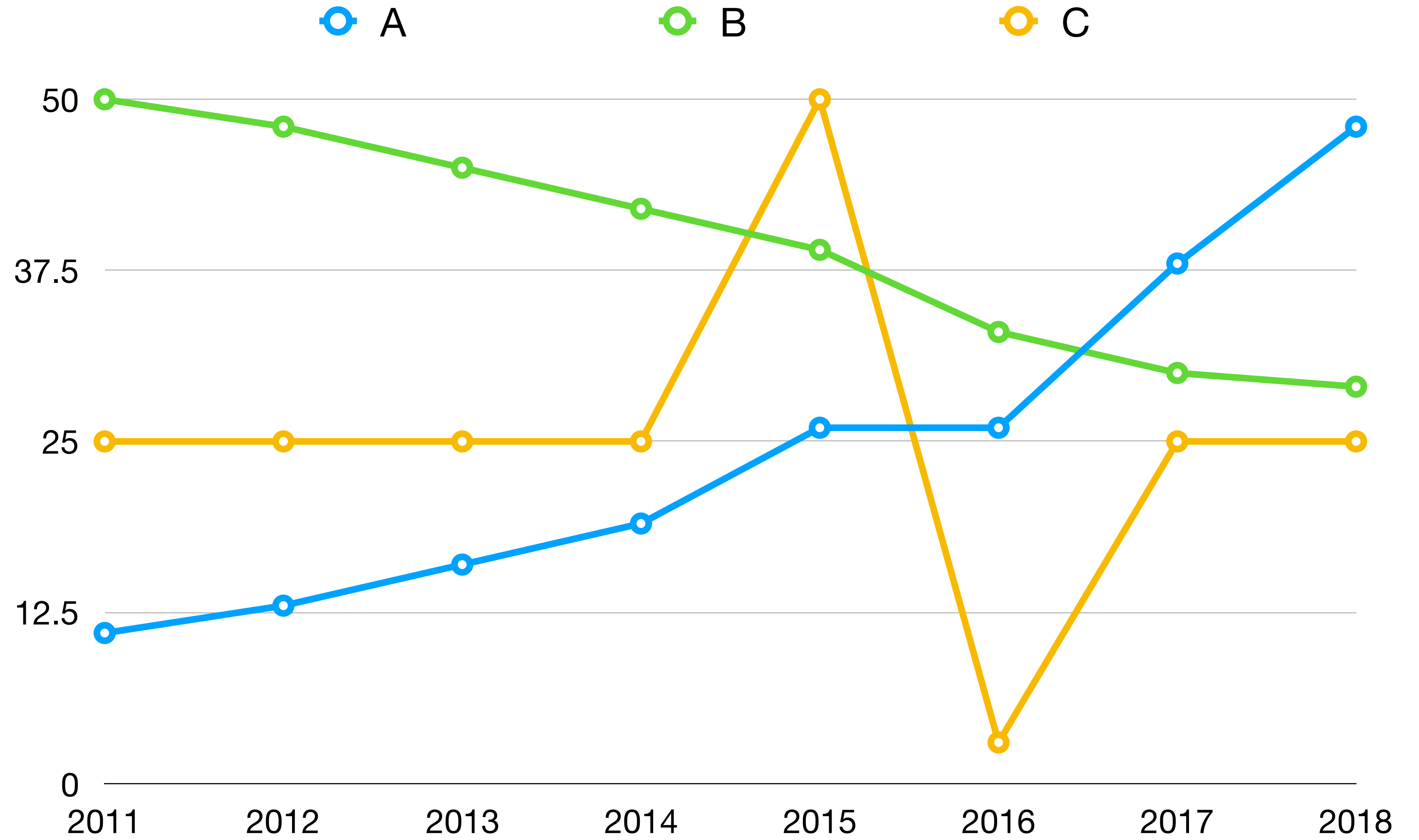
**Let's Graph Data**

**Why do we present graphs  
visually?**

Yr	A
2011	11
2012	13
2013	16
2014	19
2015	26
2016	26
2017	38
2018	48

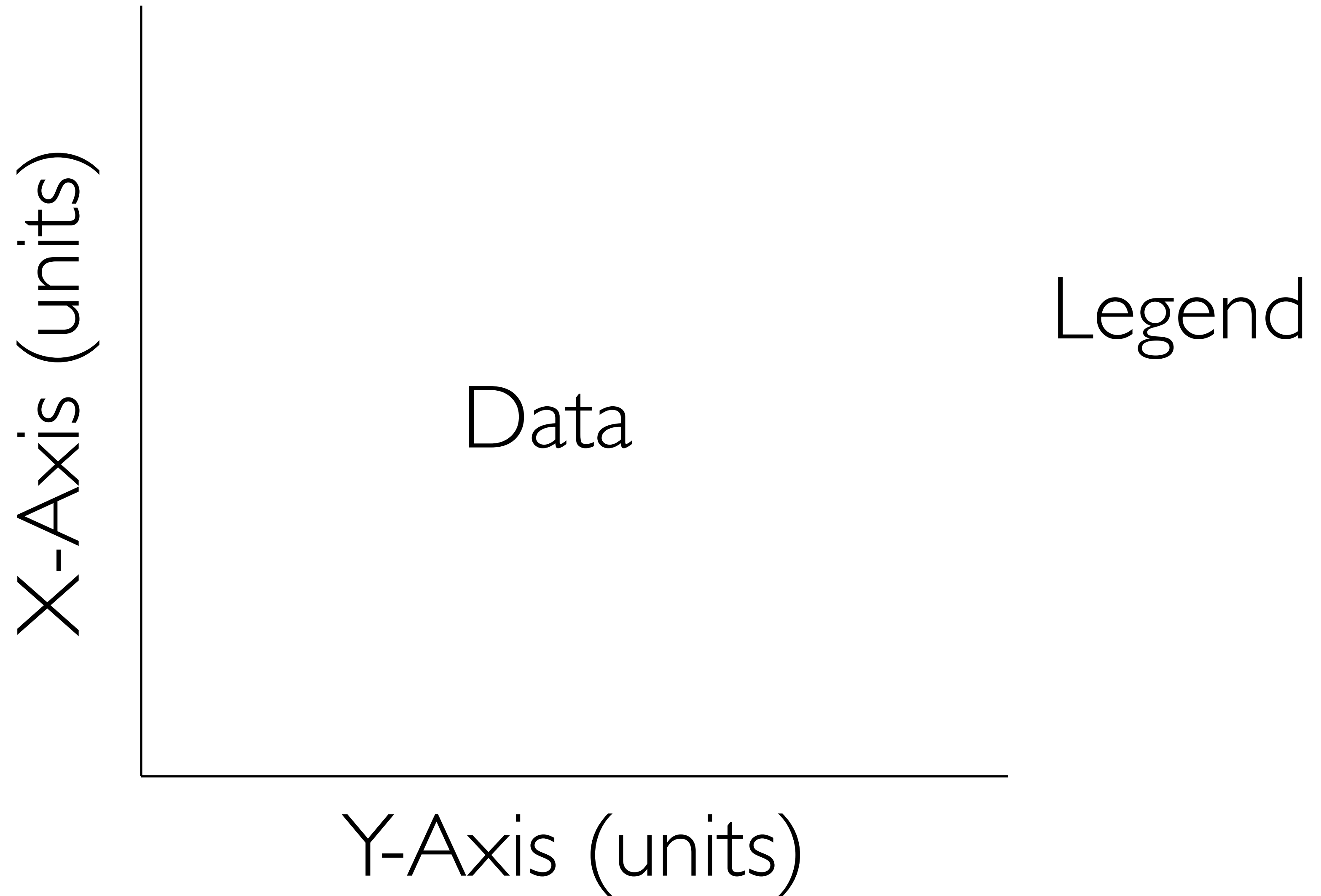


Yr	A	B	C
2011	11	50	25
2012	13	48	25
2013	16	45	25
2014	19	42	25
2015	26	39	50
2016	26	33	3
2017	38	30	25
2018	48	29	25



What's the anatomy of a  
“finished” graph?

Title and/or figure caption



**What does data look like?**

# Three kinds of data:

Continuous Data

Ordinal Data

Categorical Data



# Three kinds of data:

Continuous Data: Quantitative data that can be measured. It has an infinite number of possible values within a selected range.

# Three kinds of data:

Categorical Data: Qualitative data that groups datapoints together by some attribute.

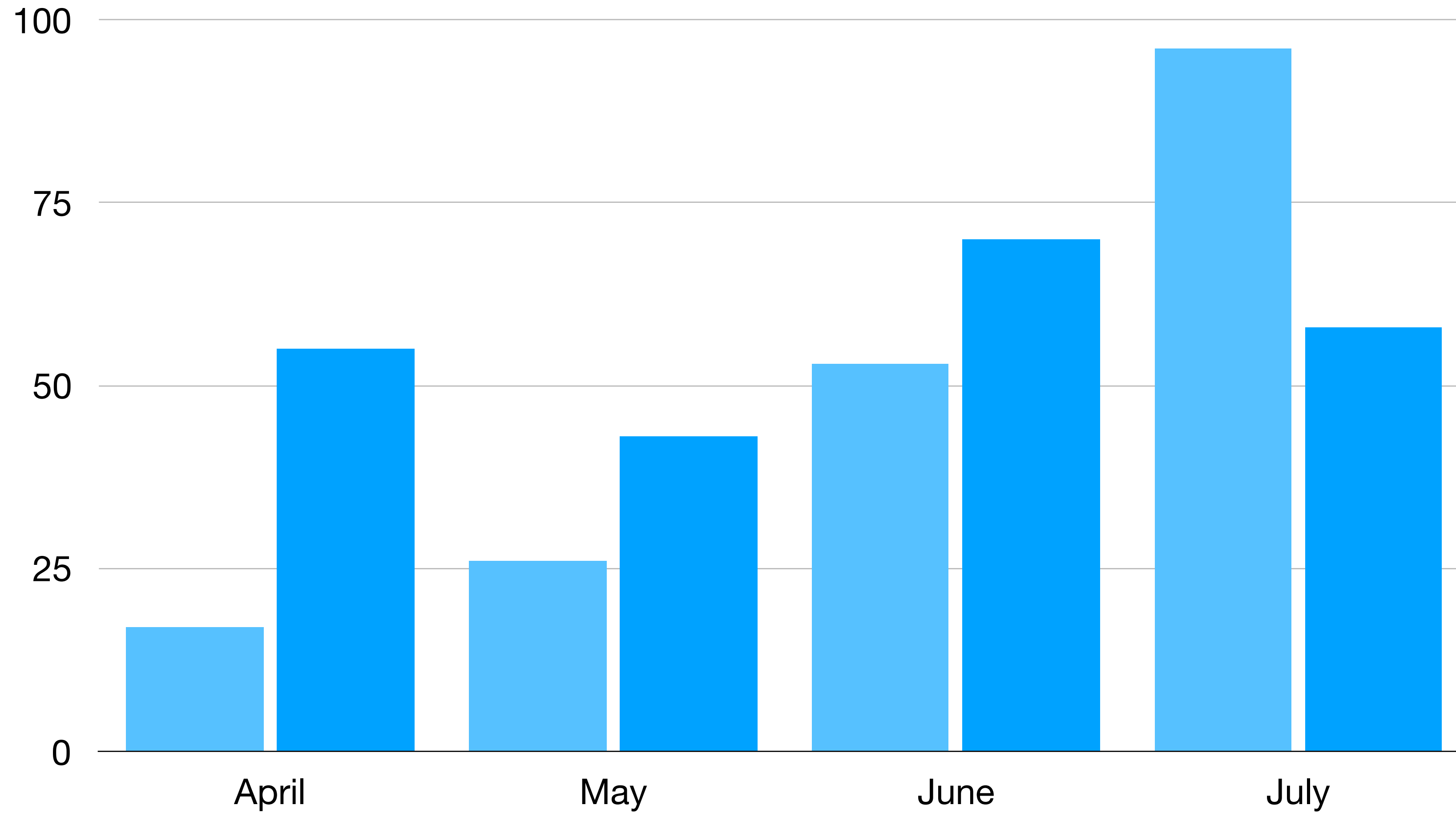
# Three kinds of data:

Ordinal Data: Is categorical data where the variables have natural, ordered categories.

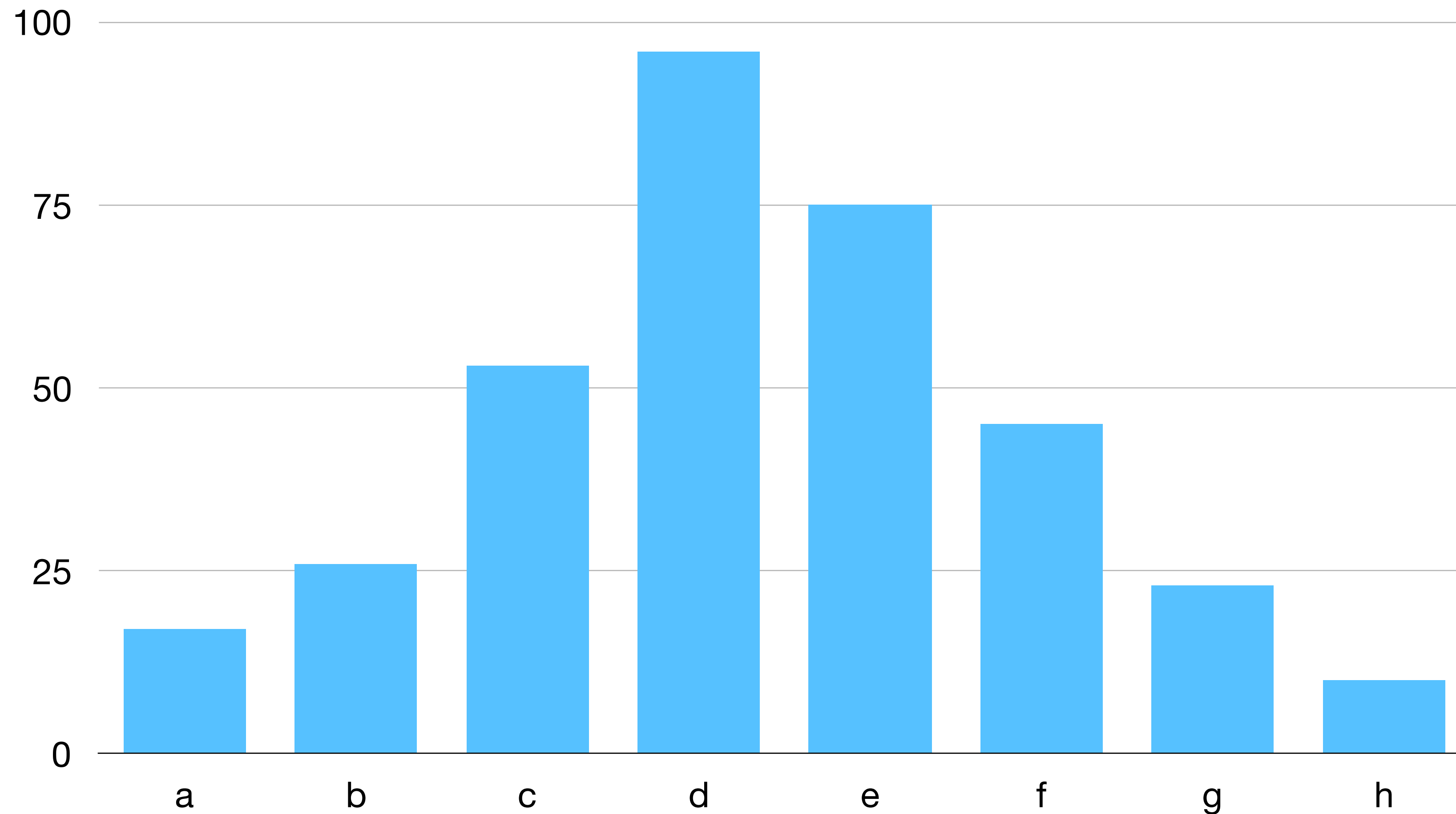
**Different types of data are  
visualized differently.**

**Name some kinds of charts**

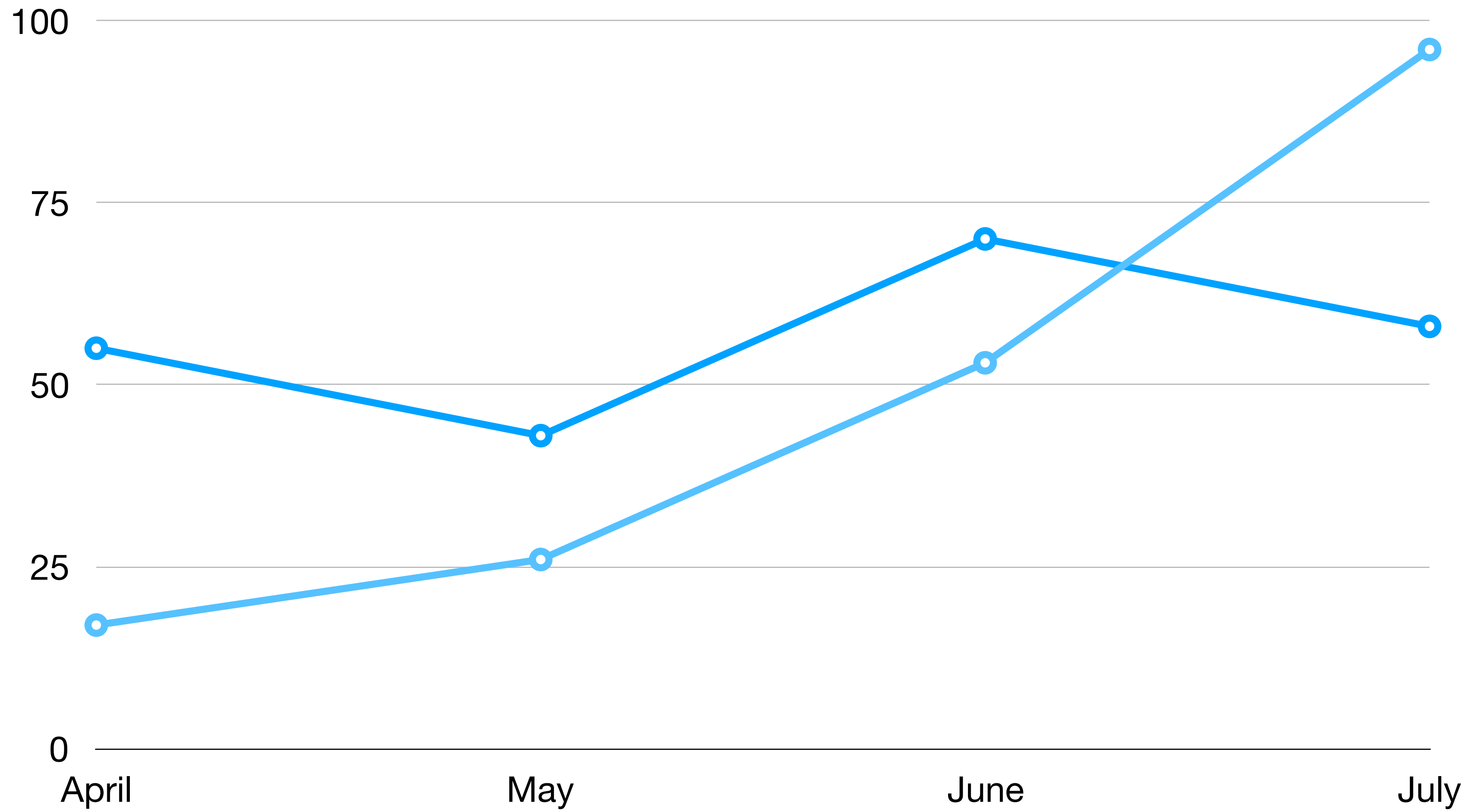
# Bar Chart



# Histogram

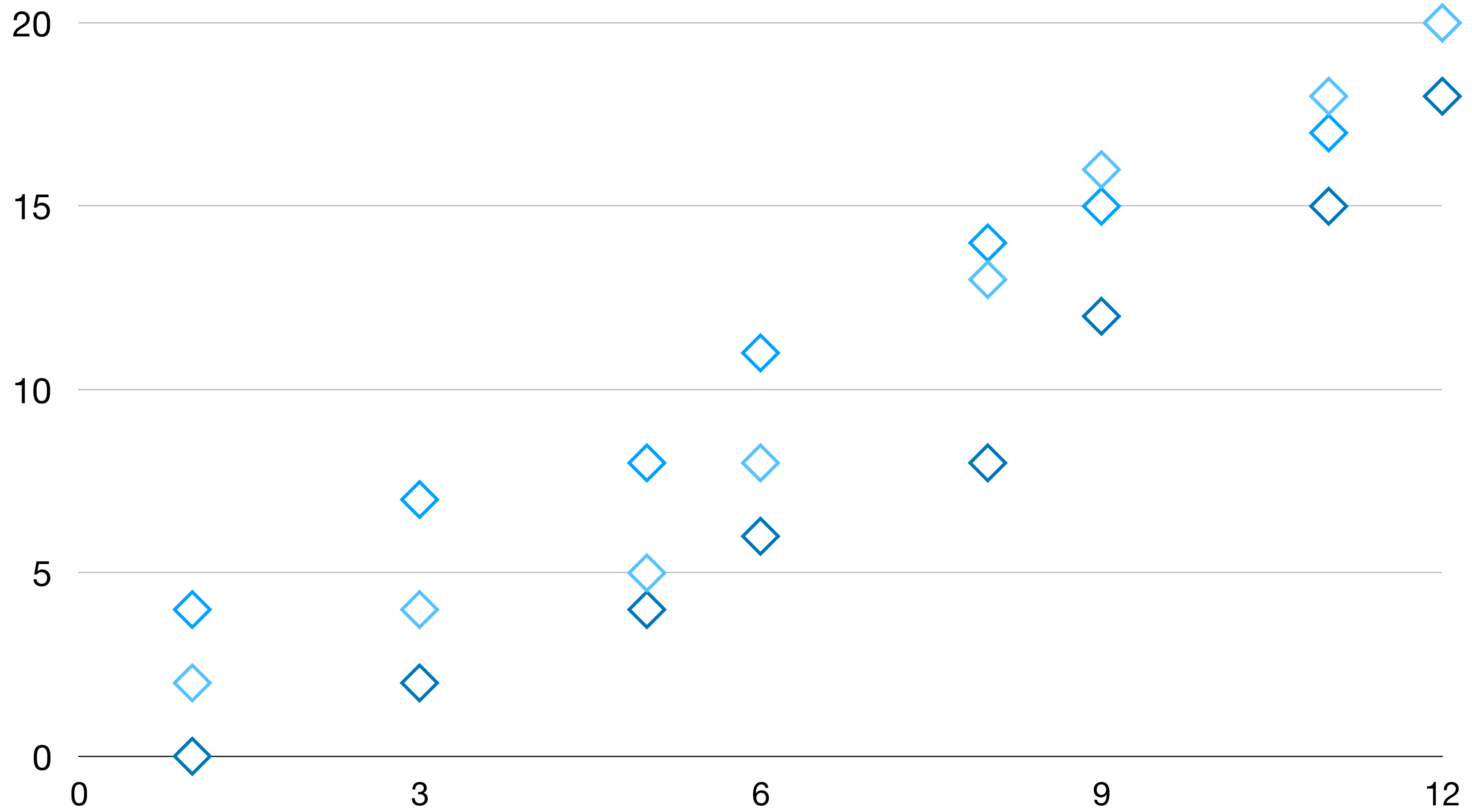


# Line Chart

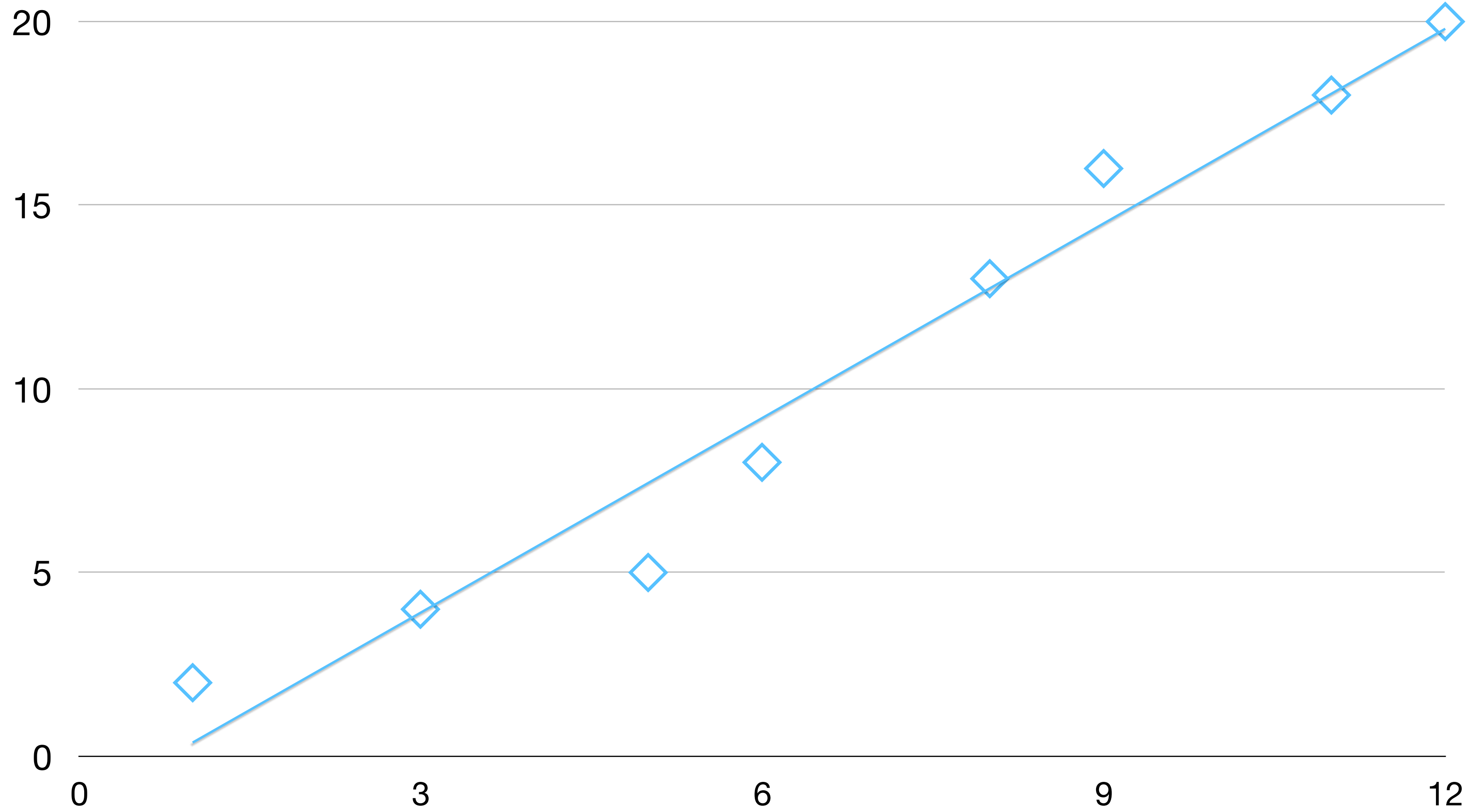




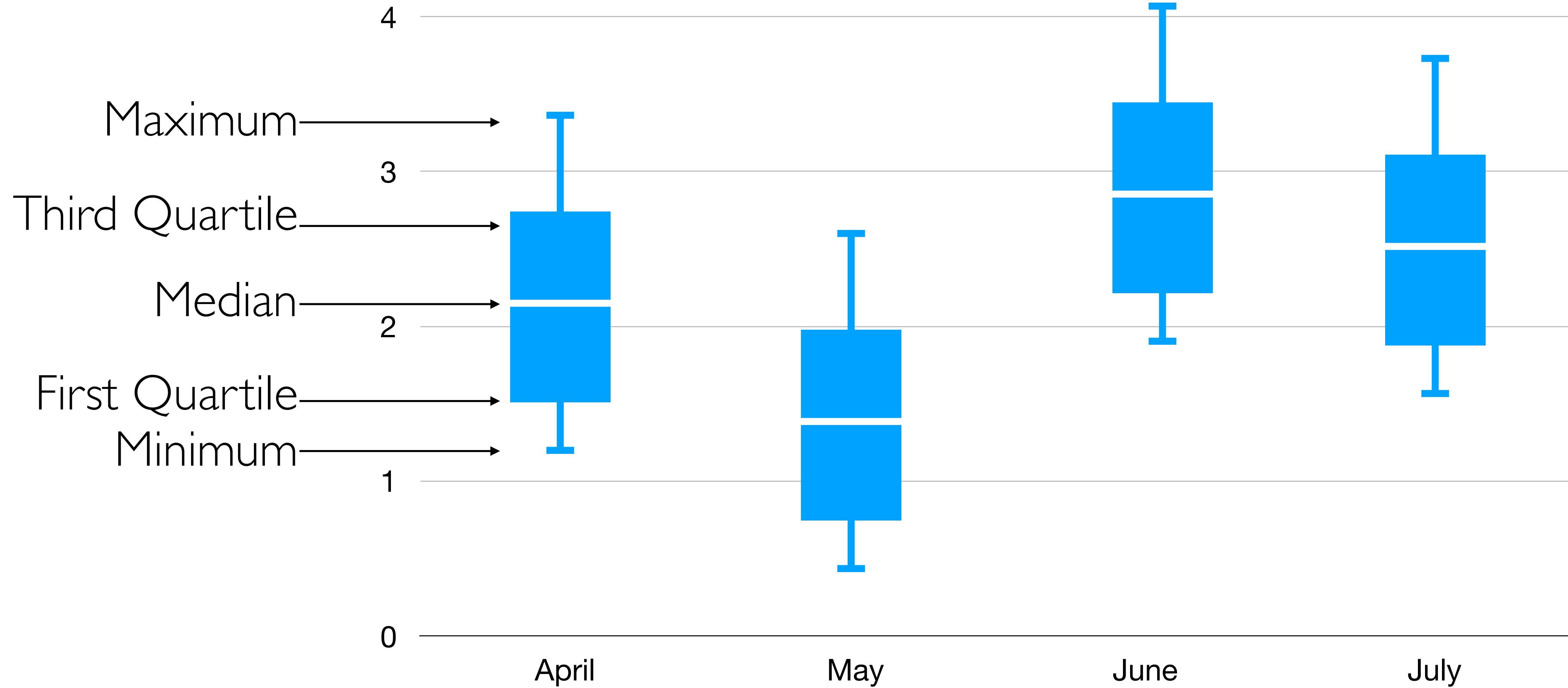
# Scatter Plot



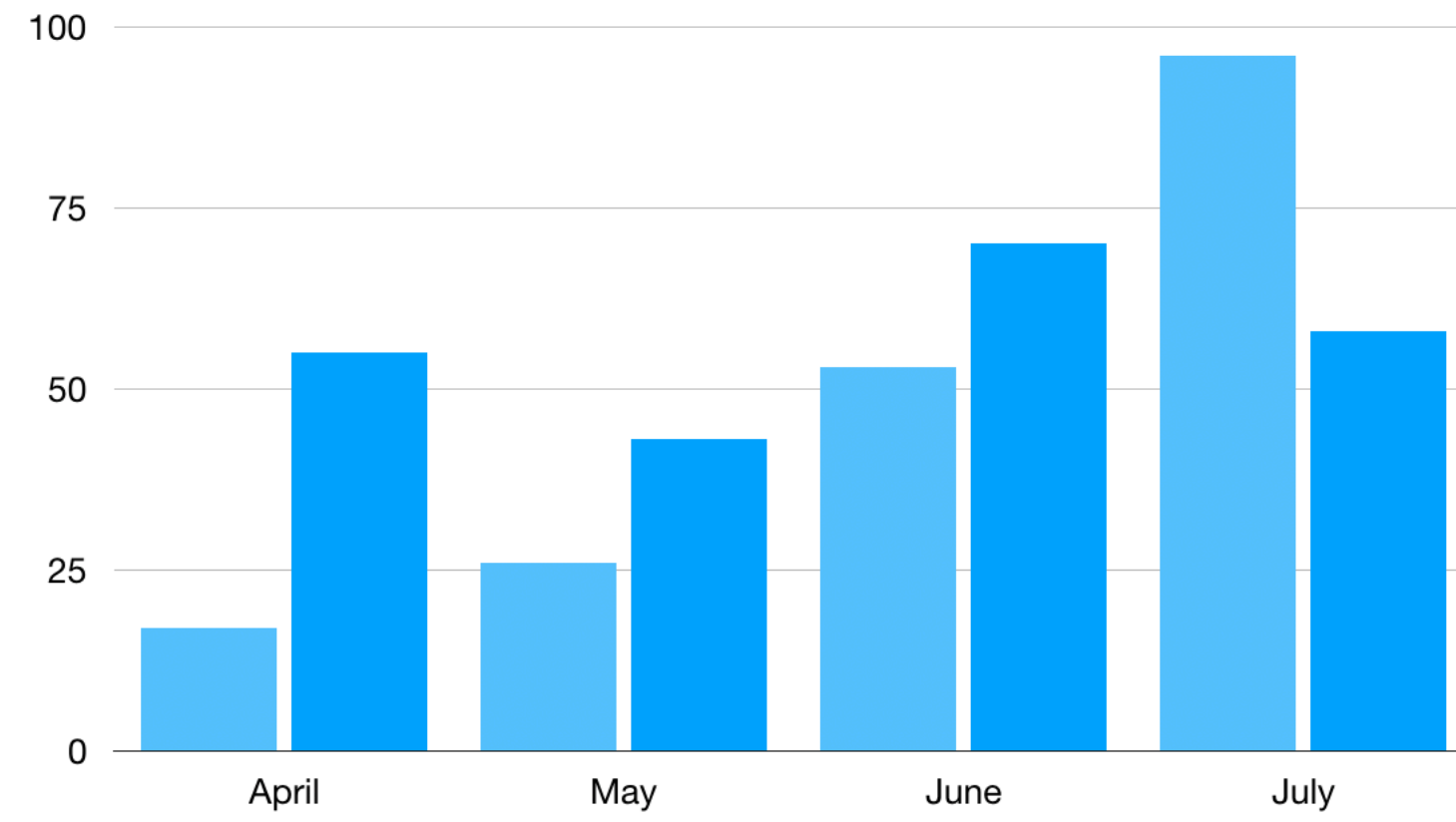
# Scatter Plot



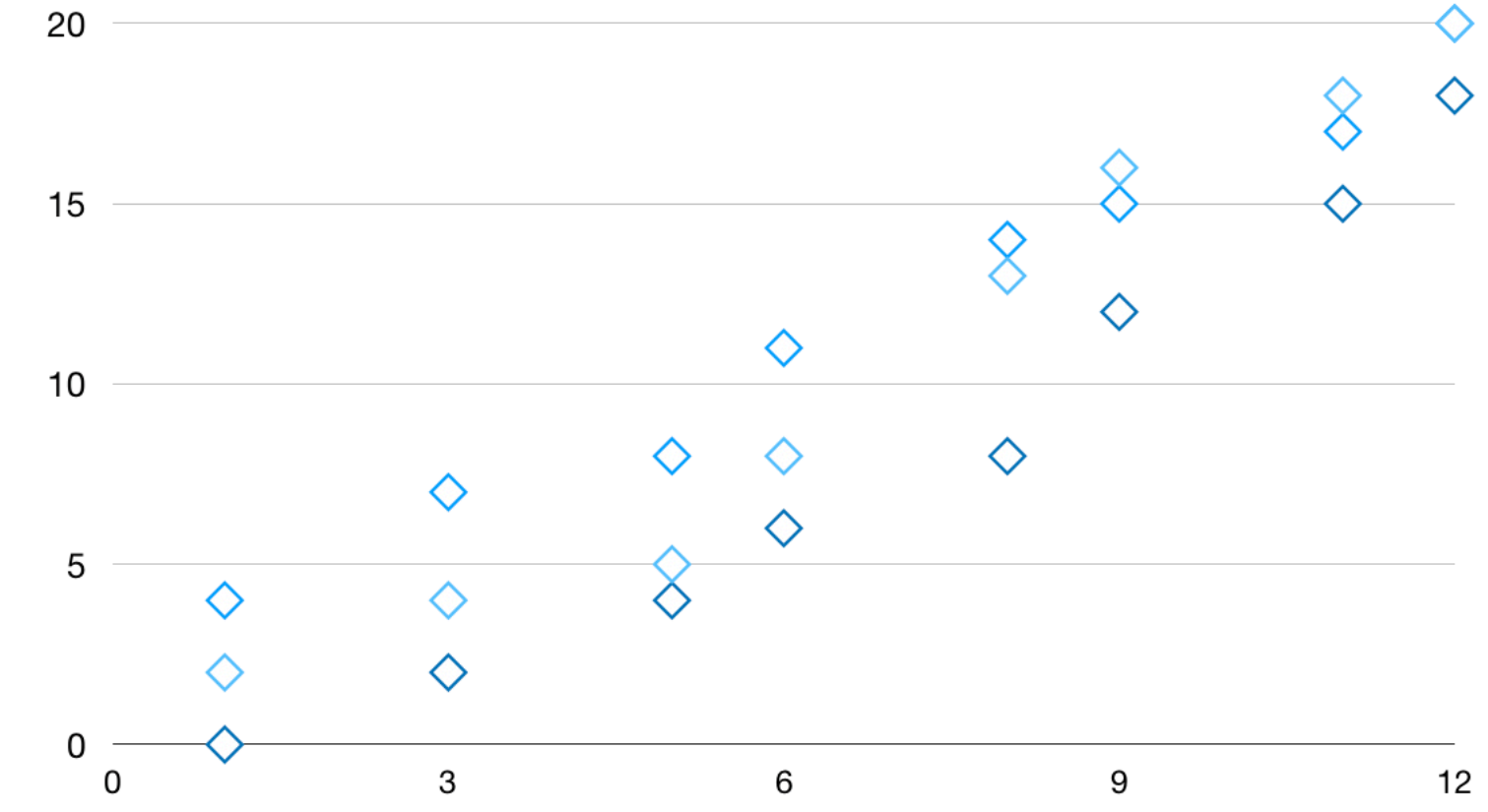
# Box and Whisker



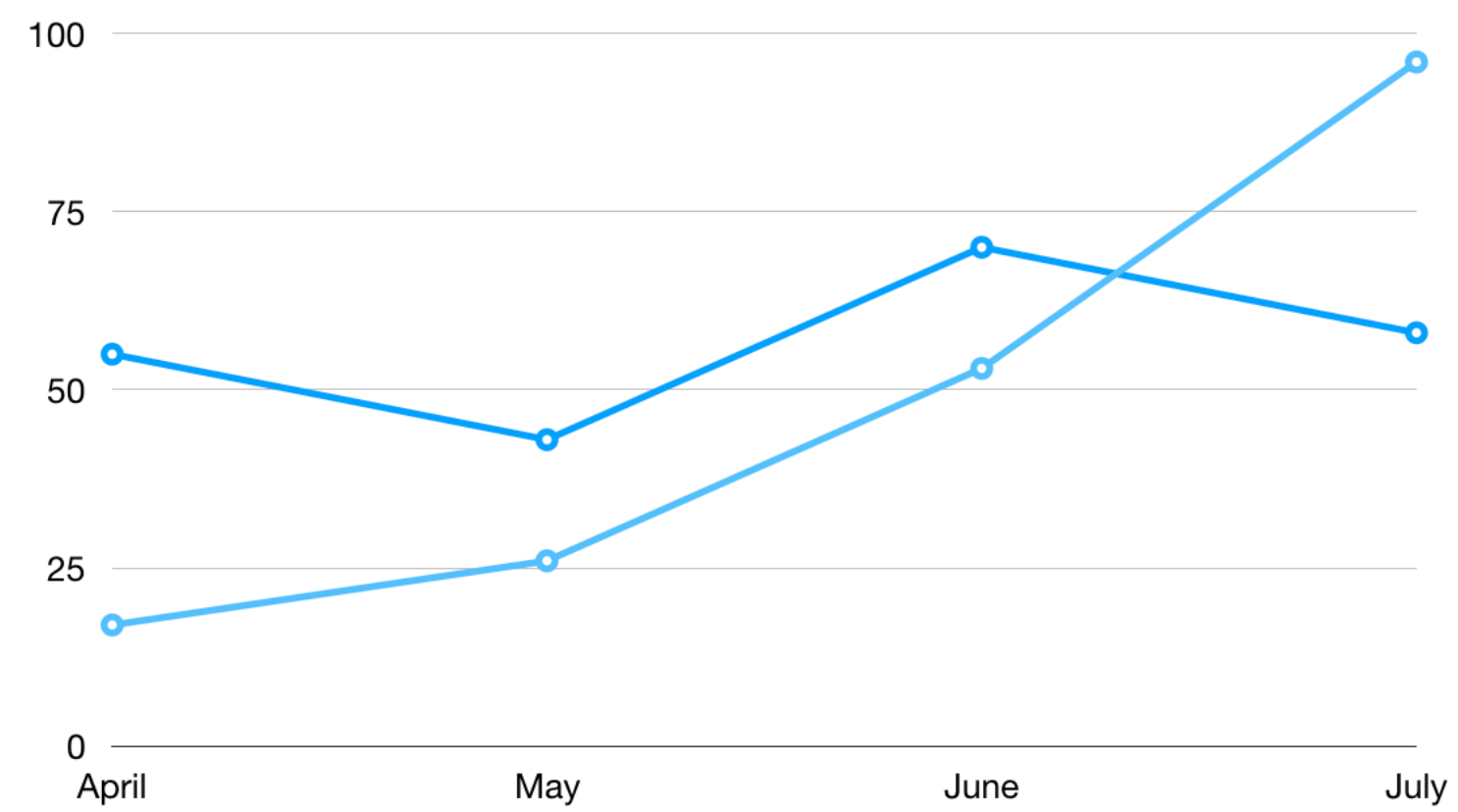
# Bar Chart



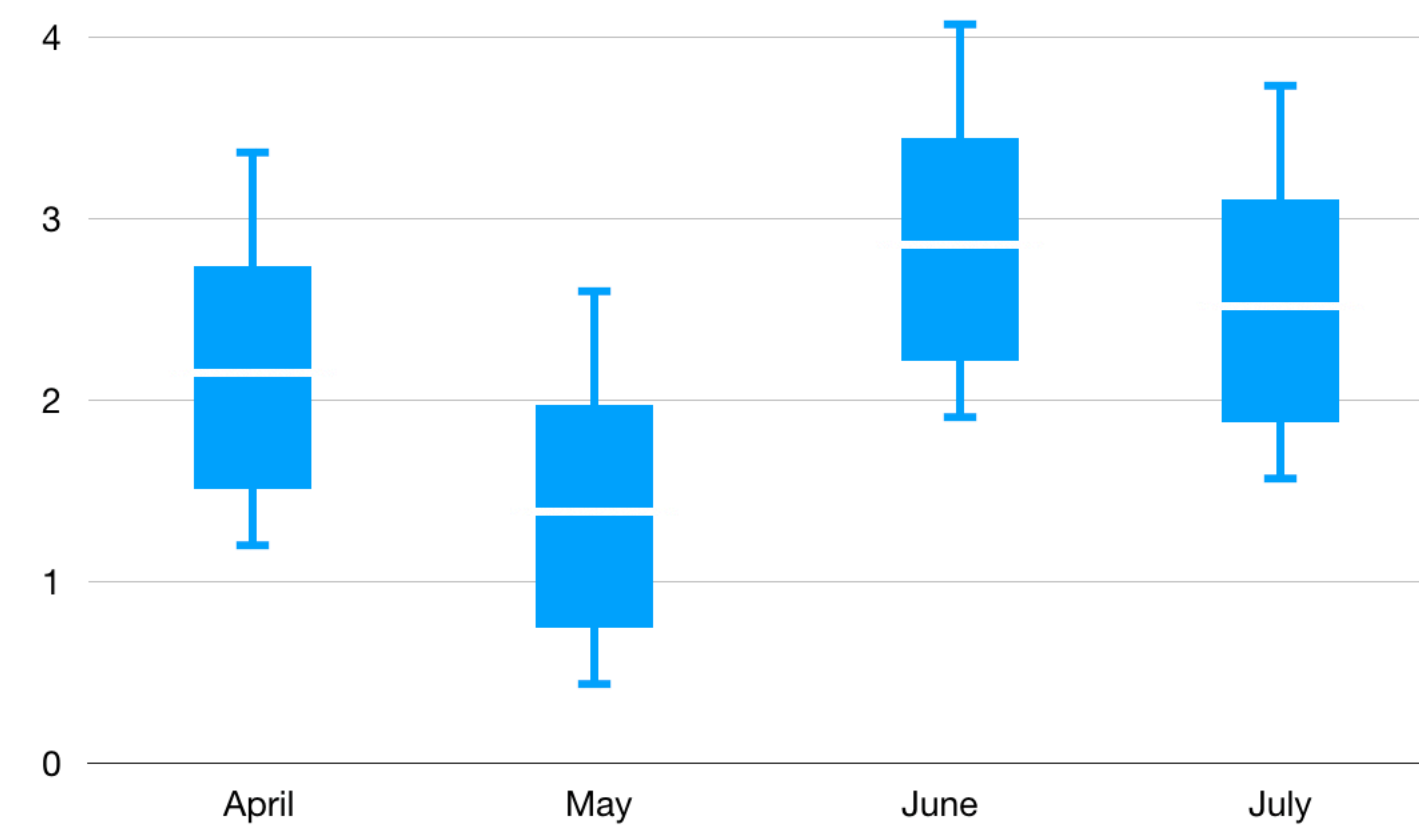
# Scatter Plot



# Line Chart

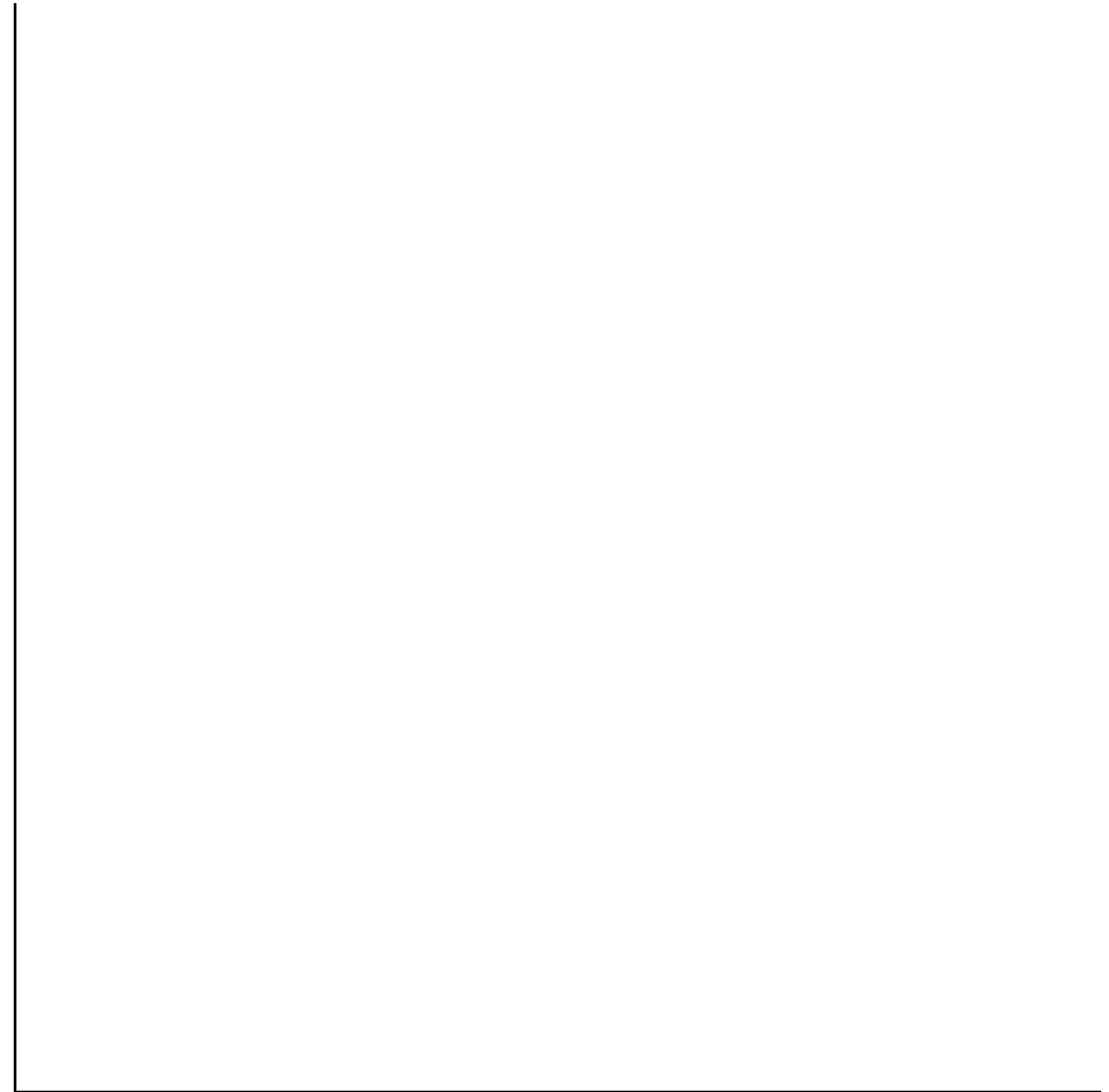


# Box and Whisker



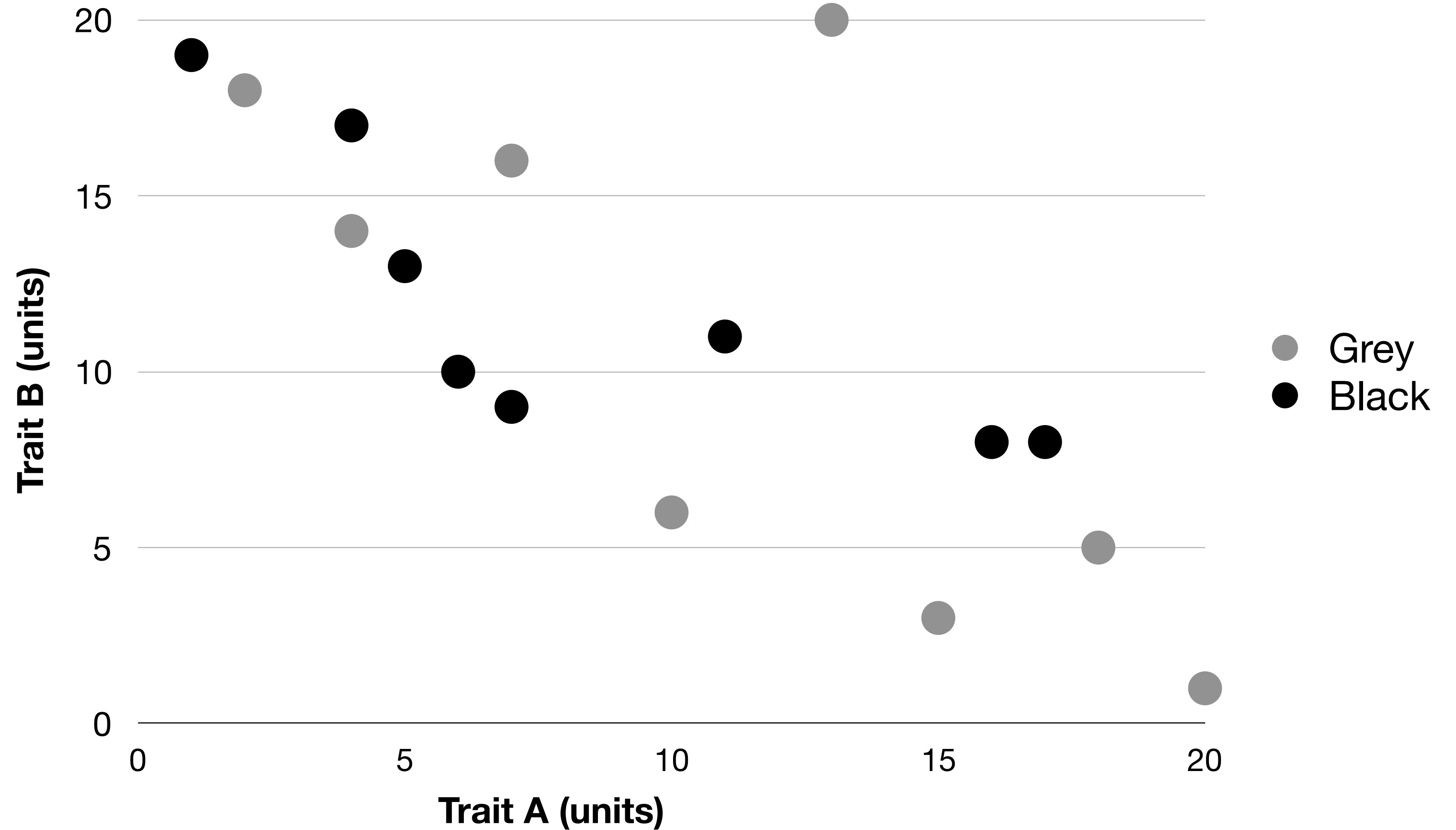
# Let's Try!

	Trait A	Trait B
Black	17	8
Black	1	19
Grey	7	16
Black	16	8
Grey	18	5
Grey	2	18
Black	4	17
Black	11	11
Grey	15	3
Grey	4	14
Black	7	9
Black	5	13
Grey	13	20
Black	6	10
Grey	10	6
Grey	20	1



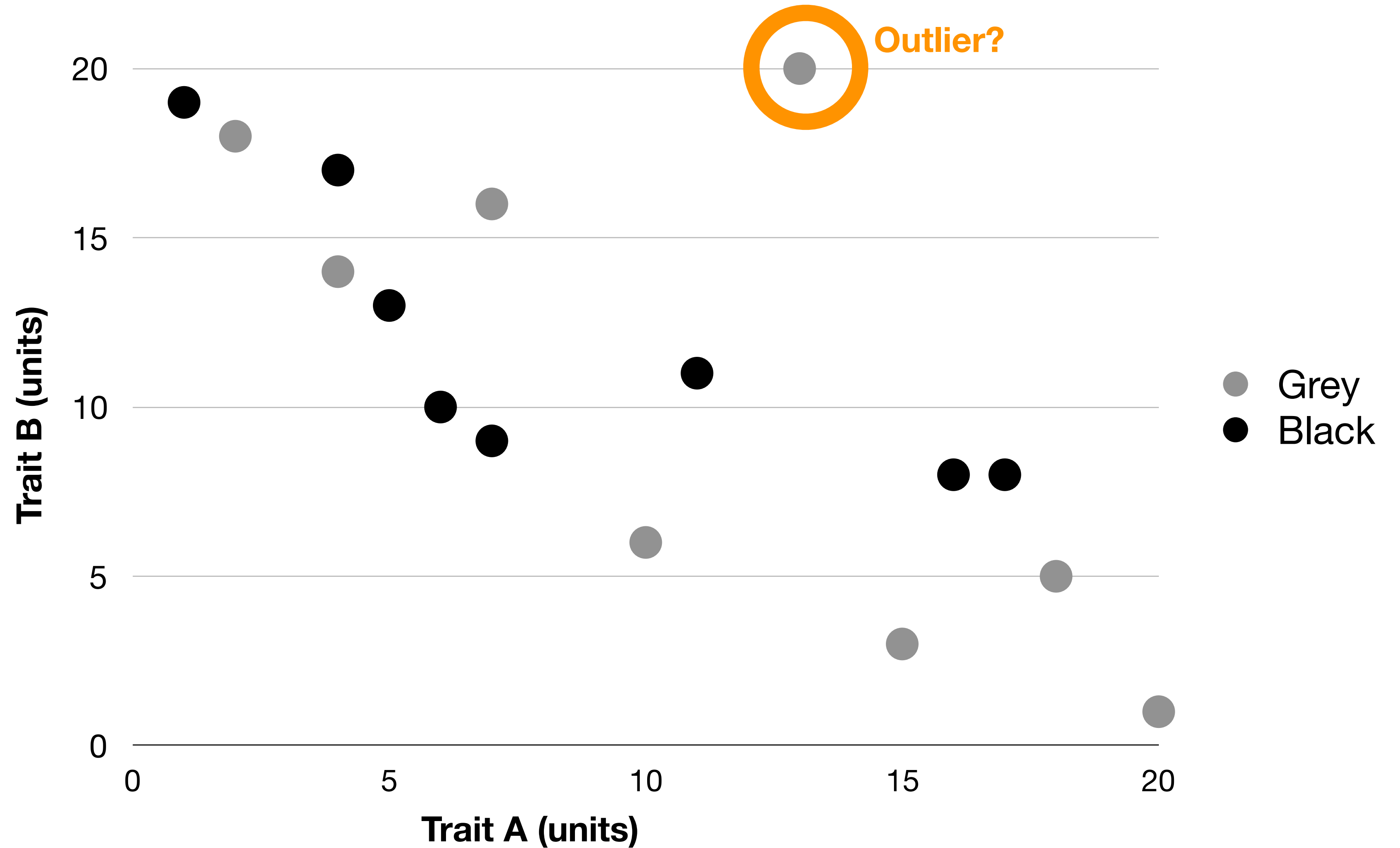
	Trait A	Trait B
Black	17	8
Black	1	19
Grey	7	16
Black	16	8
Grey	18	5
Grey	2	18
Black	4	17
Black	11	11
Grey	15	3
Grey	4	14
Black	7	9
Black	5	13
Grey	13	20
Black	6	10
Grey	10	6
Grey	20	1

**Figure 1: The relationship between trait a and trait b seems to be negative for both black and grey.**



	Trait A	Trait B
Black	17	8
Black	1	19
Grey	7	16
Black	16	8
Grey	18	5
Grey	2	18
Black	4	17
Black	11	11
Grey	15	3
Grey	4	14
Black	7	9
Black	5	13
Grey	13	20
Black	6	10
Grey	10	6
Grey	20	1

**Figure 1: The relationship between trait a and trait b seems to be negative for both black and grey.**



# Other things to remember:

Always know what question your graph is trying to answer!

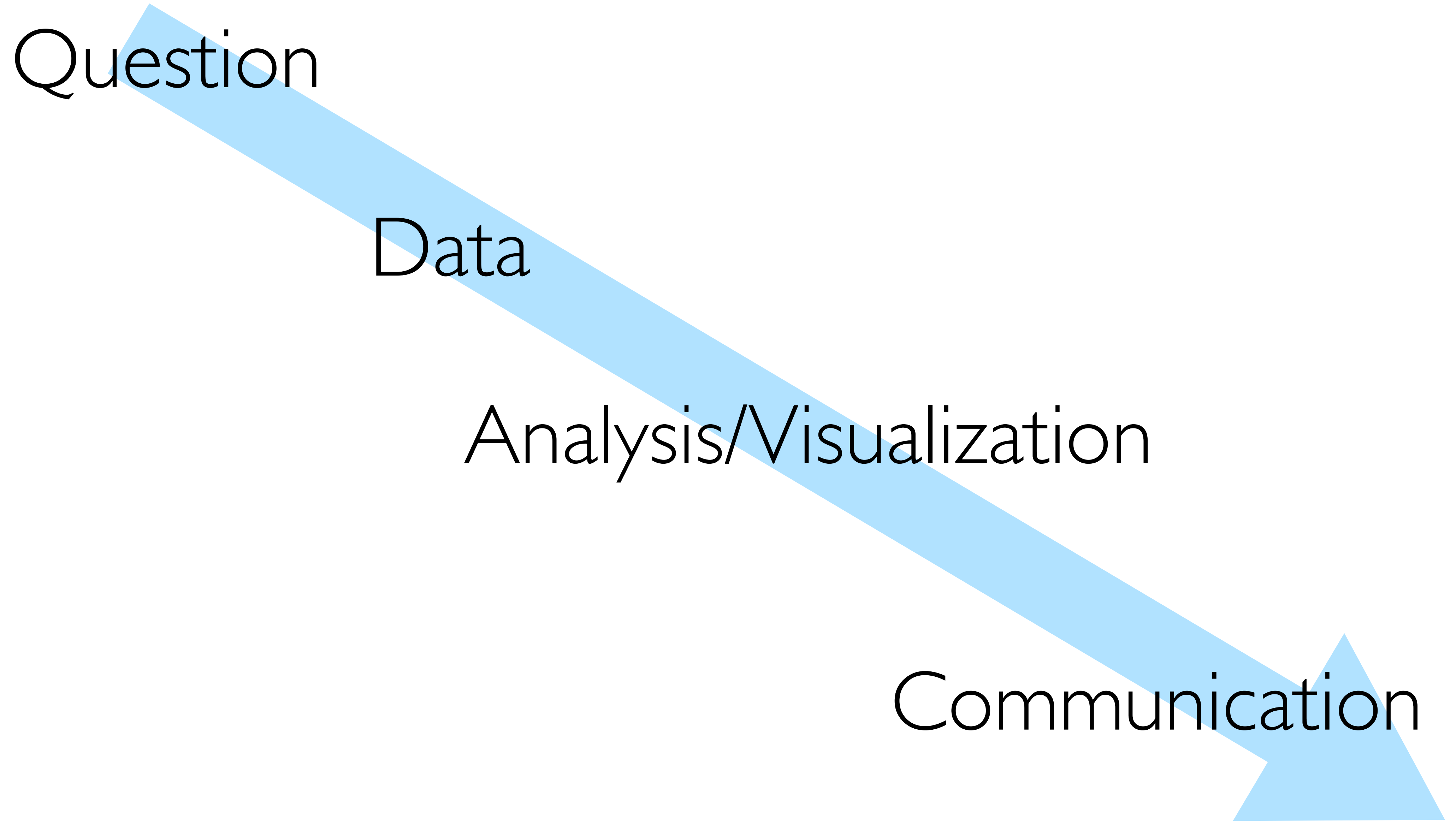


Question

Data

Analysis/Visualization

Communication

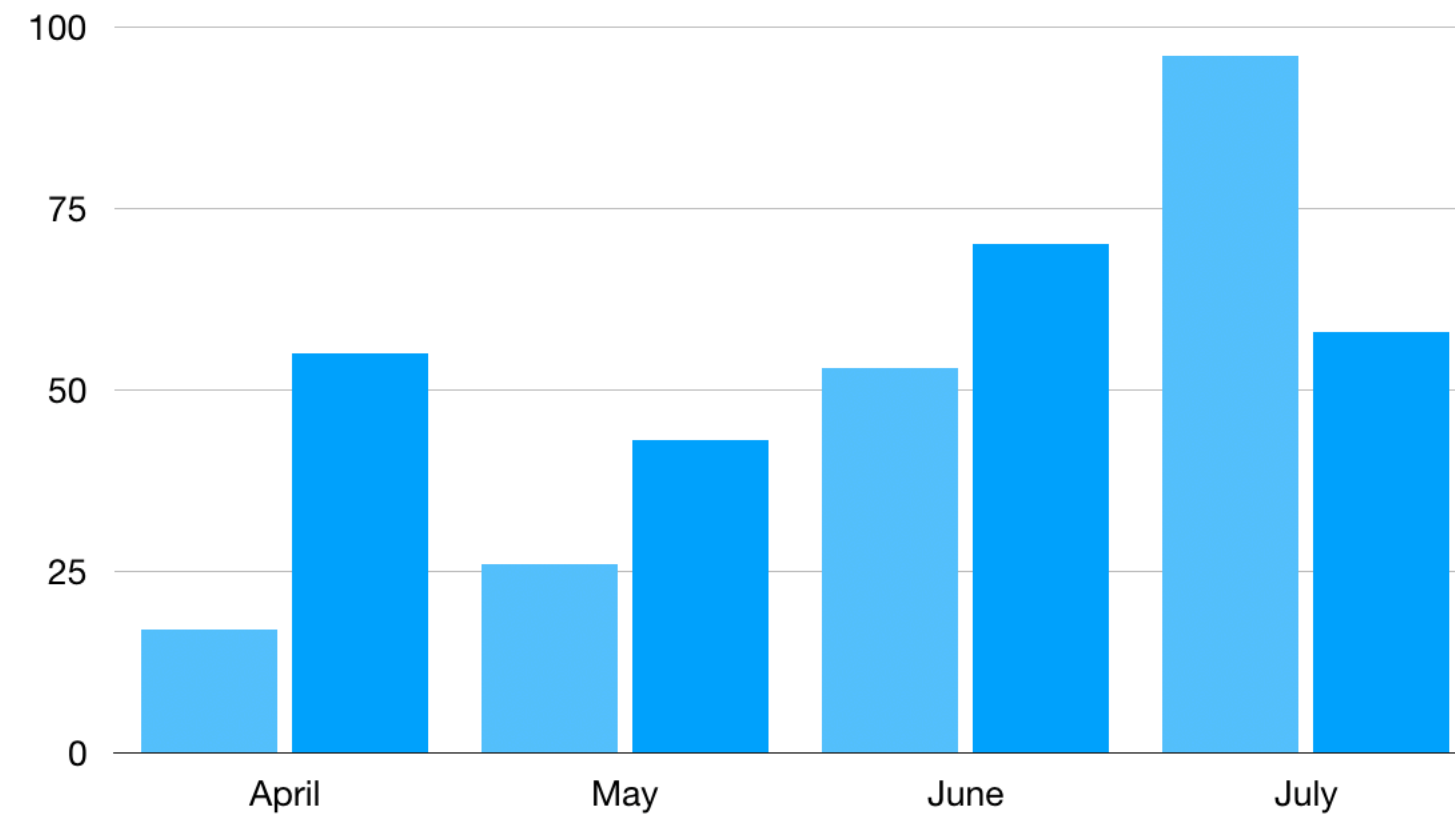




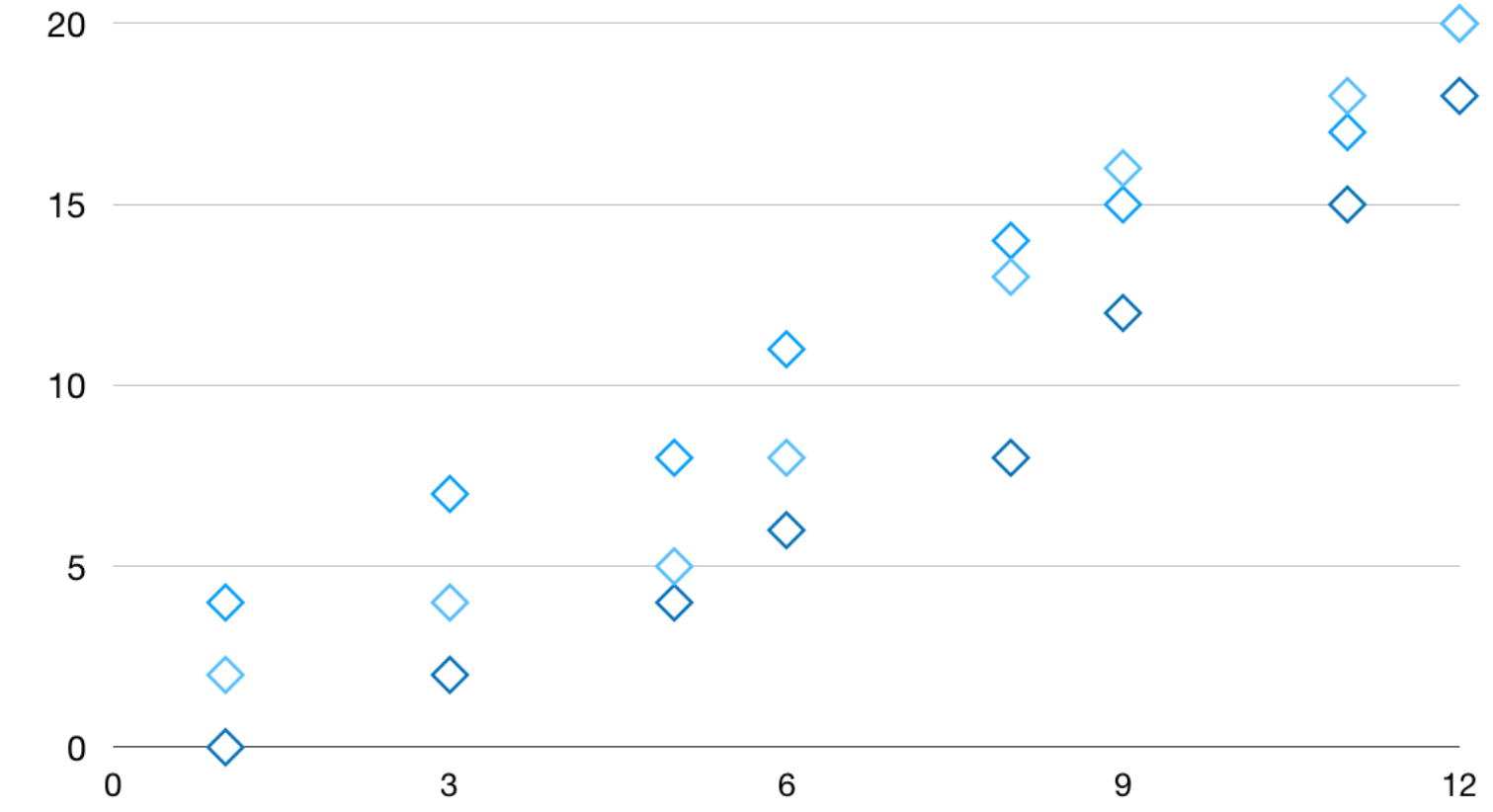




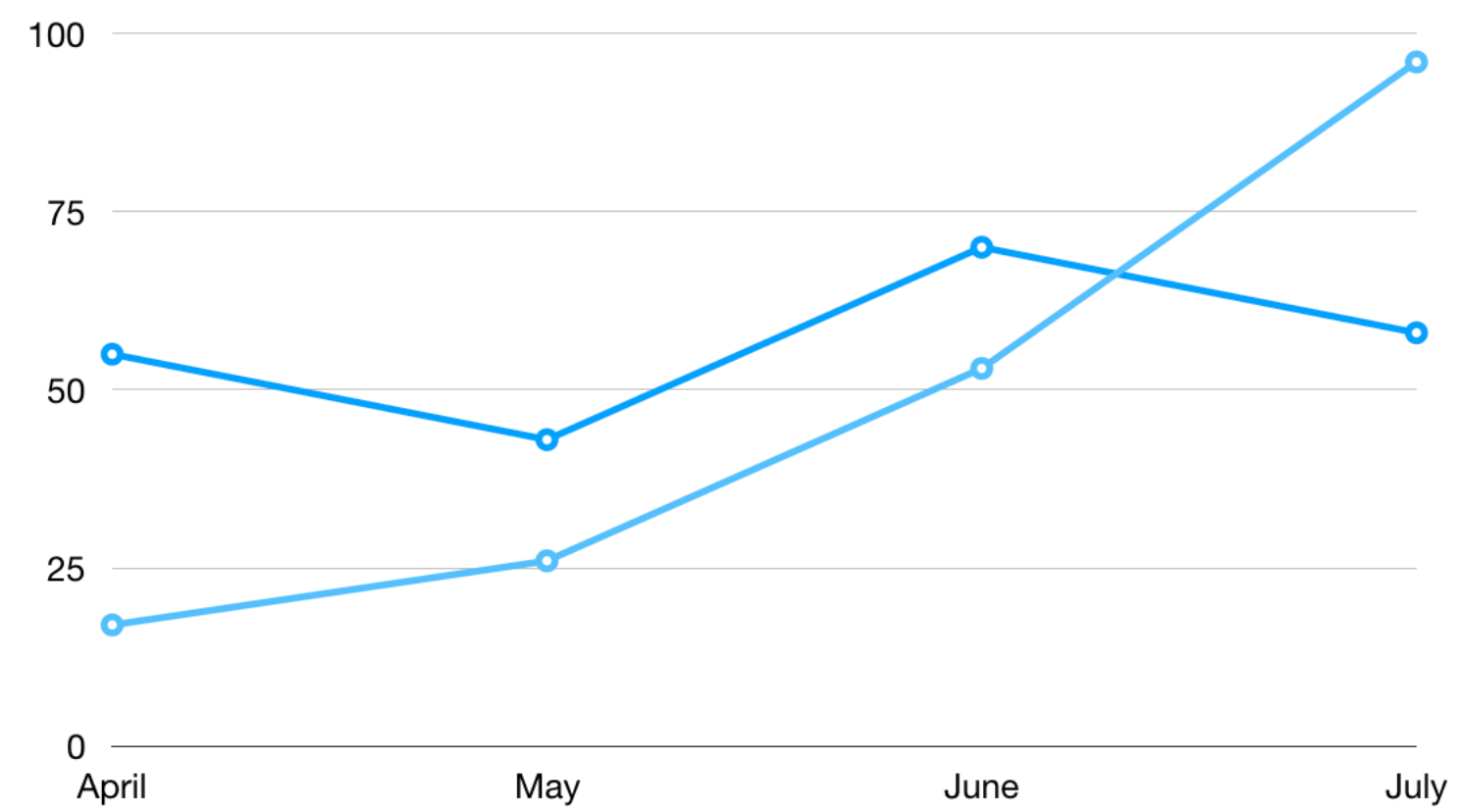
# Bar Chart



# Scatter Plot



# Line Chart



# Box and Whisker

